



EDLIN & JARVIS
ESTATE AGENTS



24 Furrow Close

Middlebeck, Newark, NG24 3XR

£270,000



3



2



1



B

24 Furrow Close

Middlebeck, Newark, NG24 3XR

NO CHAIN

This beautifully designed, three-bedroom detached family home located on Furrow Close lies within the highly desirable Middlebeck development in Newark. Built in 2021, this modern residence offers the ultimate peace of mind, still benefiting from its remaining builders' NHBC guarantee.

Offering a seamless transition for its next owner, the property is being sold with no upward chain, making it a hassle-free move. With a bright, practical layout engineered for contemporary living, this home effortlessly checks every box.

The Accommodation Ground Floor

Entrance Hall: A warm, spacious, and welcoming introduction to the home, featuring stairs rising to the first floor and access to the principal ground-floor rooms.

Lounge: A beautifully proportioned and bright reception room. Designed as a comfortable retreat for relaxing evenings.

Kitchen Diner: The true heart of the home. This open-plan space is perfect for family meals and entertaining alike, fitted with contemporary units and ample room for a dining table. Glazed French doors swing open directly onto the patio, creating a seamless indoor-outdoor flow.

Downstairs WC: Conveniently located cloakroom fitted with a modern suite.

First Floor
Master Bedroom & En-Suite: A generous, tranquil principal bedroom served by its own private, stylish en-suite shower room featuring contemporary tiling and a walk-in shower.

Bedrooms Two & Three: Two further well-proportioned bedrooms, offering plenty of space for family members, guests, or a dedicated home office.

Family Bathroom: A modern, crisp three-piece suite complete with quality finishes, serving the additional bedrooms.





Entrance Hall
6'3 x 15'2 (1.91m x 4.62m)

Lounge
9'5 x 15'9 (2.87m x 4.80m)

Kitchen Diner
10'1 x 15'9 (3.07m x 4.80m)

Downstairs WC
5'9 x 3'3 (1.75m x 0.99m)

Landing

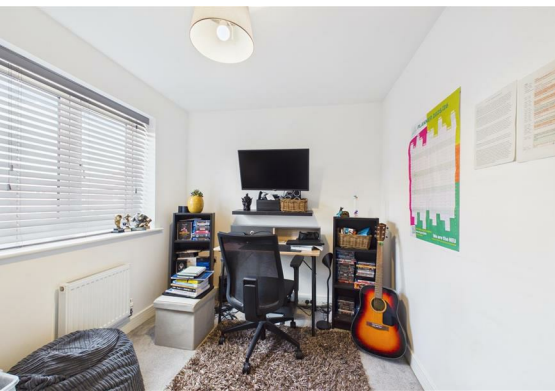
Bedroom One
9'7 x 10'11 (2.92m x 3.33m)

Ensuite
9'0 x 4'8 (2.74m x 1.42m)

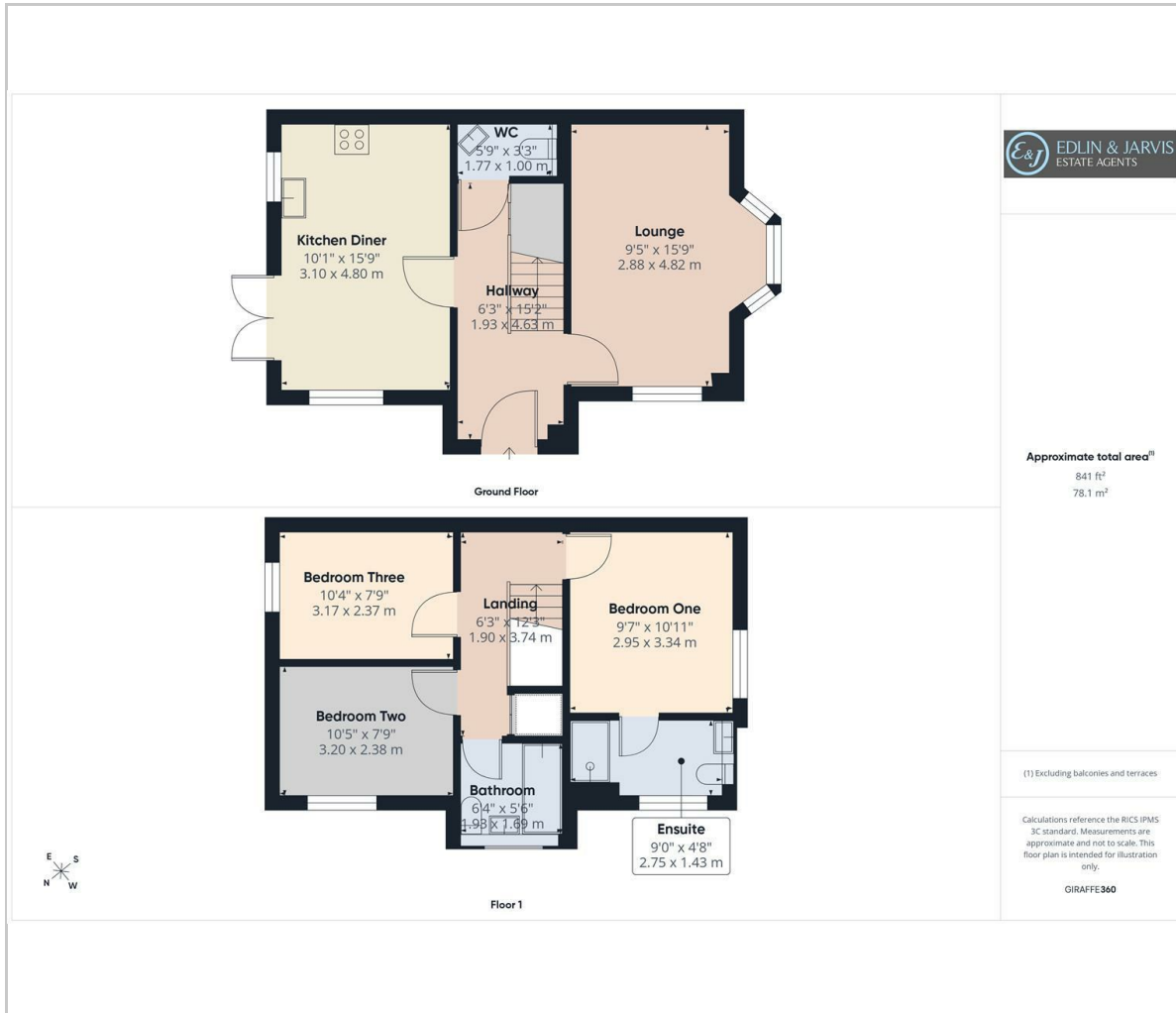
Bedroom Two
10'5 x 7'9 (3.18m x 2.36m)

Bedroom Three
10'4 x 7'9 (3.15m x 2.36m)

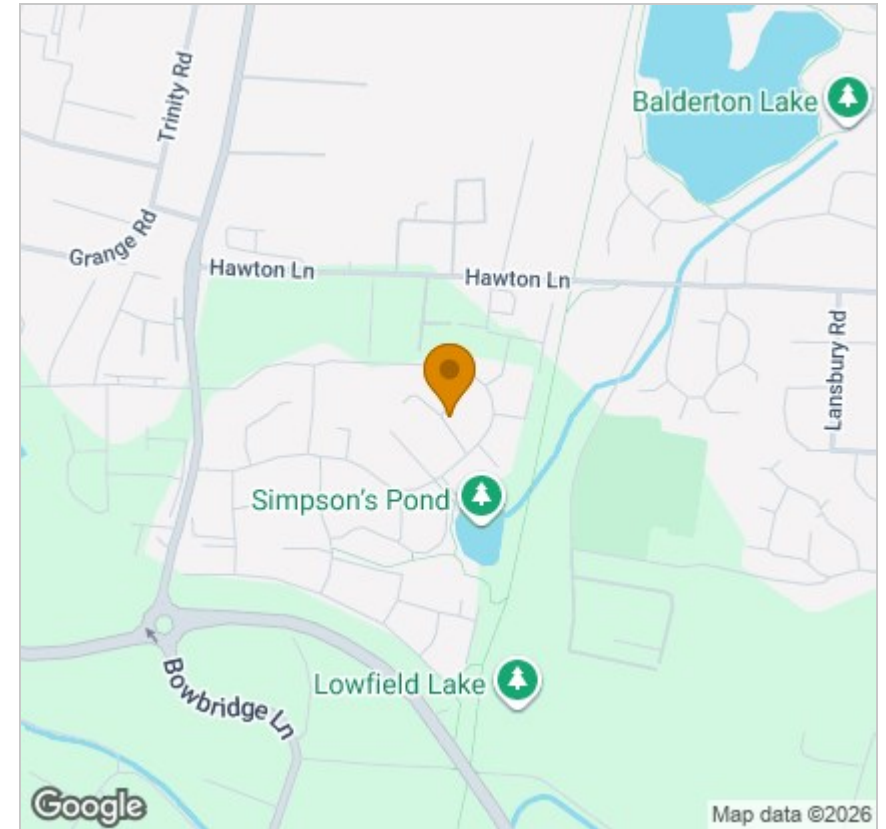
Bathroom
6'4 x 5'6 (1.93m x 1.68m)



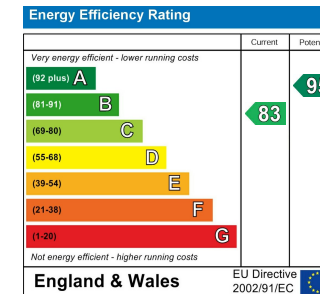
Floor Plan



Area Map



Energy Efficiency Graph



Viewing

Please contact our Sales Office on 01636 555043 if you wish to arrange a viewing appointment for this property or require further information.

These particulars, whilst believed to be accurate are set out as a general outline only for guidance and do not constitute any part of an offer or contract. Intending purchasers should not rely on them as statements of representation of fact, but must satisfy themselves by inspection or otherwise as to their accuracy. No person in this firm's employment has the authority to make or give any representation or warranty in respect of the property.

36 Middle Gate, Newark, NG24 1AL

Tel: 01636 555043 Email: enquiries@edlinandjarvis.co.uk <https://www.edlinandjarvis.co.uk/>